



MINNESOTA NORTHERN LIGHT

Lutheran Women's Missionary League
Minnesota North District

Serve the Lord with Gladness! Psalm 100:2



SUMMER 2011

In this issue

President's Pen.....	1
Memorials.....	2
Retreat at LIC.....	3
Scholarships.....	4
Young Women.....	5
Leader Development.....	6
Structure.....	6
Mission Advocacy & Grants. .	7
LWML 2011-2013 Mission. . .	7
Human Care.....	8
Christian Life.....	9
Archivist-Historian.....	9
Convention Photos.....	10
Mission Grants.....	11
Mite Calendars.....	12-14
Board of Directors.....	15



The mission of the Lutheran Women's Missionary League is to assist each woman of the Lutheran Church—Missouri Synod in affirming her relationship with the Triune God so that she is enabled to use her gifts in ministry to the world.

Visit the LWML websites:
www.lwml.org
www.lwmlmnn.org

On the edge

I'm sitting on the edge of my seat as I write this article, because I am so excited to share about convention. As I'm sure others have felt after attending convention, you think to yourself, "Where do I start? How do I put into a few sentences all of my experiences and thoughts from my time at convention?" That's how I'm feeling right now and why I'm 'on the edge'.

Let me start by saying that if you were unable to attend the convention in Peoria, you can still experience 'Being with Jesus' in a few ways:

- ★ Go to www.lwml.org, click on the convention central page. Here you will find archived photos and videos that you can view of the different sessions.
- ★ Contact your zone delegate and ask her to speak at your society meeting and/or rally.
- ★ Contact one of our Young Woman Representatives, Kari Kremer or Kristina Kuhnau, to speak at your society meeting or rally. Their excitement is contagious and will encourage you to go 'Live on the Edge'!

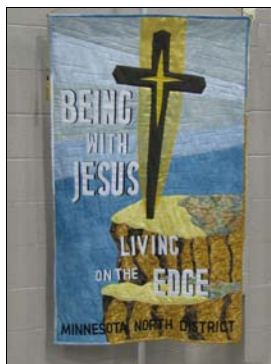
Now let me continue with some ways that I witnessed people 'Being with Jesus—Living on the Edge' at convention. . .

Three of our past district presidents, Virginia Ansorge, Phyllis Jastram and Laurain Jurchen were in attendance. They could have 'just attended' convention, but no! They were great examples to me of their continued excitement for LWML and it's ministry and mission, by attending our district caucus, singing in choir and participating in servant activities (to name a few). If you get a chance, ask them about their time at the Past District President luncheon they attended. As Laurain said, "It was like a reunion!"



Cheryl Petersen
President

- President's article continued on page 2



**MN No. District
banner at Peoria
Convention**

How about our amazing 17 delegates? WOW! Talk about 'living on the edge'! Over half of them, not only served as your delegates, but they were also first-timers! These women were truly dedicated to their responsibilities on your behalf, while enjoying their time as 'newbies.'

In speaking with our 2 YWRs, I found out that each of them had an encourager - a fellow LWML sister, who

invited them to attend meetings and then to apply to be a YWR at this convention. These mentors didn't stop at one invite and even at this convention, continued to encourage and support these ladies.

One of our MN North members - Kathy Klug of Garfield, had signed up to ride the bus to Peoria. She did not have anyone listed to be her roommate. In coordinating the bus schedule and roommate assignments, I teamed Kathy up with three other ladies (whom she had never met) to be her roomies. On the last day of convention, I was walking past Kathy and she said to me, "I have to tell you, when I found out that I would be rooming with three other ladies, I almost thought about not going. I was very worried about this. But now I am SO glad I came! This has been a wonderful experience and I am glad I met these ladies and got to room with them." I told her that she had 'lived on the edge'. She smiled and said, "Yes, I guess I have!"

All of the convention attendees gave a tremendous witness to the Peoria Civic Center staff, when after waiting over an hour to be seated for their Saturday evening meal, they still were gracious and kind to those employees. Let us all hope that at least one of those employees walked away that night, having experienced 'Being with Jesus.'

You may notice in another article in this issue the name, Barnababe. You might think to yourself, "What is that?" Let me provide the background. The name Barnabas means 'son of encouragement.' Dr. Reed Lessing, our Bible study leader made the statement, "Well, maybe you can't all be a Barnabas, but you can be a Barnababe!" Obviously, this met with loud applause and smiles from all 4000+ Barnababes in the audience!

I will close my article with a few thoughts and quotes from convention:

- † We were reminded through different examples in the book of Matthew and then our study of Acts, that Jesus 'lived on the edge' - how did he live? - Intentionally - Compassionately - Courageously - Sacrificially.
- † We must meet Jesus out on the Edge, where HE is already at work.
- † It's not how many times you have been through the Bible, it's how many times the Bible has been through you.

MN North Sisters, you can live on the edge, just by stepping out of your comfort zone in your own 'neck of the woods.' You can help others to 'Be with Jesus' through your interactions and examples of Christ's impact on your life.

May God bless our LWML mission and ministry.



Gifts

- ★ Marion Maatz in memory of Virgil Raaf.
- ★ Immanuel, Parkers Prairie, in memory of Ruth Koehn.
- ★ St. John, Wheaton, in memory of Harold Ahlsten.
- ★ Lynnette Roshell in memory of Lottie Hanson.
- ★ Marion Maatz in memory of Jerry Zahn and Charles Tompson .
- ★ Trinity, Sauk Rapids, in memory of Alice Lemmerman.
- ★ Immanuel, Parkers Prairie, in memory of Jan Schultz.
- ★ Our Savior's Evening Guild, Crookston, in memory of Glorene Meyer.

- ★ Marion Maatz in memory of Beryl Gloege.
- ★ Immanuel, Parkers Prairie in memory of Justin Hemmerlin.
- ★ Marion Maatz in memory of Bert Hillman and Don Railand.
- ★ Trinity Ladies Aid, Bemidji, in honor of Lois Dale's 90th birthday .

*Memorial and honor
gifts should be sent
to the Financial
Secretary Marilyn
Hiltel, 6850 Golden
Spike Road,
Sauk Rapids, MN
56379-9715.*

Retreat at Lutheran Island Camp August 12-14, 2011

Wanda Hall will be our guest speaker at the LWML retreat. She is an exciting and vibrant woman. Let me share her answers about herself when I asked for a bio:

Where are you from?

I'm originally from Barnesville, Minnesota. I was born and raised there and moved after graduation to Illinois where I enjoyed skydiving and studies at the local community college. I returned to Minnesota a few years later. I was confirmed as an adult several years later, which is a story that I'd be glad to tell at the retreat as to "how I got there."



Wanda Hall

How did you find out about short-term mission work?

Regarding the "how I get anywhere," God has a plan for us all and what an honor to be seeking His plan and sharing with others what He has done. In 1999 I held the position of Minneapolis Conference Vice President with the MN South District LWML. I was also on the Public Relations committee for which I had our display table at a convention at Concordia College in St. Paul. The display table next to mine was from M.O.S.T. Ministries (Mission Opportunities Short Term). I took the brochures, prayed about it, and before I knew it was going to Latvia and didn't even know where it was! Latvia is just west of Russia between Estonia and Lithuania on the Baltic Sea. I have been there four times with M.O.S.T. Ministries at their English Camp.

What did you do there?

We teach English with the Bible as the text in a camp setting out in the country. This is very similar to our vacation Bible school with arts, crafts, music, recreation, and drama, with the exception that we are with them camping for seven days. The people that came were mostly teenagers, but there were small children with their parents and older adults. English lessons were in the morning with Bible

study in the afternoon and the other activities throughout the day and evening. My duties varied from assisting teaching to leading Bible study, being the team medic (for medical needs for both the students and the M.O.S.T. team), drama leader, and recreation leader. I also assisted with music when the need arose.

Can other LWML women have the same opportunity?

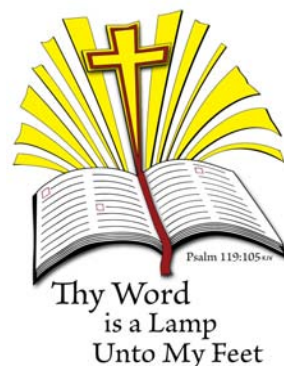
YES, and I'll be so glad to share how at the retreat. When asked, "WHY would LWML women want to do this?" The answer is a simple one: We are Women in Mission and that's what we do. We love Jesus and want to share the Good News whenever and wherever we can. To share the Great Good News of His Love and what He has done for us to those who are so hungry and thirsty for the Word is such an exciting honor, and truly it was like "being on vacation with God," I thought. He was totally in control. (We made our plans of course and tried to follow them, but can look back to see that He had something totally different in mind and we were just the vessels in getting His Will done.)

Praise and Thanks to our wonderful Lord and Savior. There are still people who haven't heard and He provides the opportunity for us to tell others every day wherever we are. Wow, so exciting! (Yes, I'm jumping up and down again—everyone who knows me knows I jump up and down when I'm excited—even when I'm typing!)

I'm so looking forward to the retreat this summer. I hope you will come to LIC to hear Wanda.

Retreat registration forms were in the Spring issue of the *Minnesota Northern Light* or you can go to www.lwmlmnn.org, click on Events, then MN North LWML District Retreats. You can also find this information on the Christian Life page.

Mary Kuhnau, Christian Life Chairman





Go into all the world

Being a part of the LWML offers us many opportunities to grow in our role as “Women in Mission,” and to grow in our personal walk with Jesus as we serve others. Collectively we are able to accomplish much for our Lord.

In Matthew 28:19–20, we are told to go into all the world, making disciples of all nations, baptize them in the name of the Triune God, teaching them to observe all He has commanded. That is a big order! Through our personal witness, prayers, and the mites that we give, we are able to help fulfill this command.

Two of the mite projects selected biannually at our district conventions have been funding for scholarships, seminary and church work.

At the 2010 District Convention in Alexandria we adopted a mite project to help in the Anyuak Ministry in Sauk Rapids. One of the members of that group, John Bakou, will receive a scholarship to assist in his educational expenses to become an ordained minister and share the Gospel of Christ to his people in Sudan.

A total of 17 scholarship applications were received this spring and all will be receiving grants.

SEMINARY GRANT:				
NAME	YEAR	CAREER	SCHOOL	COMPLETE
Travis Loeslie	4 th year	Ord Mnstr	CTS, Ft Wayne	2012
John Bakou	1 st year	Ord Mnstr	ElIT, CS, St Louis	2015
CHURCH WORK GRANT:				
NAME	YEAR	CAREER	SCHOOL	COMPLETE
Andrew Coop	Freshman	Pre Sem	CU Wisconsin	2015
Sarah Berg	Senior	Teacher	CU St Paul	Dec. 2012
Sarah Hansen	Freshman	Teacher	CU St Paul	2015
John Koopman	Senior	Pre Sem	CU Seward	2012
Mark Langton	Junior	Pre Sem	CU St Paul	2013
Alexandra Meyer	Junior	Deaconess	Valporaiso	2014
Caileen Ostenson	Senior	DCO	CU St Paul	May 2012
Brandon Rehm	Freshman	Pre Sem	CU Seward	2015
Anna Schield	Freshman	Teacher	CU St Paul	2015
Kyle Sorkness	Junior	Pre Sem	CU St Paul	2013
Leah Timm	Junior	Deaconess	CU St Paul	2015
Rachel Vogt	Soph	Teacher	CU St Paul	2014
Kayla Vrudny	Senior	Teacher	Cu St Paul	2012
Rachel Vrudny	Junior	Teacher	CU St Paul	2013
Stephanie Wilde	Fresh	DCE	CU St Paul	2016

Going through the award process has been interesting and inspiring. Reading the comments submitted by their references were heartwarming—these are young people we can all be proud of. It is important that we pray for these students regularly, that their faith remain strong, that they do well in their studies, and that they serve our Lord while serving others with true joy. Send them notes of encouragement. Show your interest in their progress when you have opportunity.

Serve The Lord with Gladness!

YWRs impressed with Peoria Convention

Okay, I will admit it, I am an LWML convention junkie. I attended my first Minnesota South district convention in 1996. It was great fun. I learned so much about the larger structure of the LWML and met so many wonderful sisters in Christ, that when the opportunity came up to attend the LWML convention in Charlotte, North Carolina, I applied to be an YWR, and was chosen. In total I have now attended eight LWML conventions and eight district conventions. Every convention is special and unique and has different memories.

I have a theory, though, that the most special convention, is your first LWML convention. No other convention will ever compare to the first. It was really wonderful this year to go to the Peoria convention and see the convention through the eyes of first-timers, our YWRs. I asked Kristina Kuhnau and Kari Kremer to share their highlights with you in this article.



**President Cheryl (center)
with YWRs Kristina Kuhnau (left)
and Kari Kremer.**

Kristina was most impressed with how much money (over \$80 million on the national level alone) had been raised by the LWML over the past 69 years.

Kari's favorite highlight, (among many) was listening to the mission speakers report first hand on how the past mission projects had impacted their lives and the lives of others. Kari remarked that she did not know about the larger business aspects of the LWML and attending the convention helped her to realize that the organization is much larger than her local society.

Kristina admitted she was excited to attend the convention, but a bit nervous to go. She was afraid that she may not fit in with the other YWRs, but upon arriving at convention and meeting the other

67 YWRs, she felt welcome and right at home. She discovered that she has a passion for the LWML and the mission projects.

Kari was amazed that Katie Stam, Miss America 2009 was so 'normal.' However, Kari also realized that Katie's strong relationship with God was the key to her normalcy and grounding.

Kari quoted Past LWML President Jan Wendorf, "Let's not be concerned with numbers and membership, but with the mission of the LWML." That line in Jan's speech caught me too. While we need workers in the harvest fields, we need to be concerned more about the harvest rather than the number of workers. The Lord will provide.

If you would like to hear more about our YWRs' experiences, please contact them to speak at your society meeting or zone rallies.



**Lynnette Roshell
YWR Committee
Chairman**

"The mission of our church body has been propelled by the LWML."

- Dr. David Birner, Associate Executive Director
of the International Mission Team
for LCMS World Relief

Go! Share Jesus! Grant awarded

After reviewing five applications for the "Go! Share Jesus! Grant," the \$500 grant was awarded to Stacey Hildreth of Grand Rapids. Stacey will be going to Nakavule, Uganda, on a short-term mission trip to help build a school for Nakavule Lutheran Church.

Some of the projects at the school include finishing off the exterior and interior with builders, setting up bookshelves, classroom arranging and working on education/lesson plans.

"God Gave the Increase" is a new book of encouraging stories of God at work through LWML mites. It tells the history and results of LWML Mission Grants since the LWML was founded in 1942. You may order the book online at www.lwml.org or from the LWML Catalog.



Lynn Lahd
**Leader
Development
Chairman**

Be bold for our Lord

I've just returned from an out of this world event, the LWML convention in Peoria. What a truly wonderful experience. I was equipped, encouraged, energized, and challenged by the speakers to live on the edge. The second-day Bible study led by Dr. Reed Lessing was based on the part of the convention verse,

"For we cannot help speaking

about what we have seen and heard" (Acts 4:20 NKJV) and was divided into five main points, each building on the one before it. I would encourage everyone to view this at the LWML website: www.lwml.org/conventions/2011-peoria/videos/index.php.

I want to be a Barnababe, a people mover, an encourager, a person who stays in the Word, tells it like it will be, and is honest and humble.

One of the most memorable statements at the convention for me was one that Katie Stam made during her presentation. Katie talked about something that a teacher once said to her as a child. The teacher talked about the word JOY and making it a priority in her life. The JOY the teacher was talking about was

the acronym where "J" represents "Jesus", "O" represents "others", and "Y" represents "you". If we set all our priorities with JOY we will have the right order in life. What a great way for us to prioritize our lives as we strive to live on the edge by putting Jesus first, others second and ourselves last.

Another light bulb went on for me during the break-out luncheon I attended. Debra Burma talked about the importance of equipping, encouraging, and exciting the women we work with. As leaders, mentors, and sisters in the LWML, we should be doing all three of these actions. By helping equip others we are giving them the tools to do the Lord's work. By encouraging our sisters, we are helping to give them the courage to live on the edge, and by being excited about what we are doing we are inviting them to get excited too.

Living on the edge for our Lord can be scary, but as we were reminded several times throughout the convention, we are never alone. Our Lord is right there beside us all the time. We need to be bold for our Lord. I encourage all to take the time to go to the LWML Website and view the convention's archived videos. It will be well worth your time. I know you will come away equipped, encouraged, and energized. You too will want to "live on the edge" for your Lord.

Structure is a Life Saver

"Being with Jesus, Living on the Edge" (Acts 4:13b & 20 NKJV) The LWML Convention has come to a close. What an awe-inspiring four days it was! Everyone--

- ☺ Sang
- ☺ Heard Proclaimers speak the True Word of God
- ☺ Visited with Missionaries
- ☺ Toured the Exhibits



Speaking of exhibits--the structure committee had an interesting display with games, mint Life Savers, and a drawing. Carol Schmidt, LWML Structure Committee Chairman, was present most of the time. It was exciting to meet the person that corresponds with me. I worked in the exhibit during one shift. The games included information about changes in recording meeting minutes and

how to make a motion.

During the presenting of the proposed bylaw amendments, I experienced structure in action. It showed how parliamentary procedure can really " ... be done decently and in order" (I Corinthians 14:40 KJV).

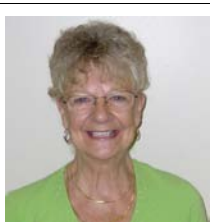
Doris Weispfennig, Structure Committee Chairman



Structure Committee Chairman Doris Weispfennig with Carol Schmidt, LWML Structure Committee Chairman, at the convention exhibit. Everyone received a card that stated "Structure is a 'life saver.'"

LWML adopted a mission goal of \$1.825 million for the 2011-2013 biennium:

1. Support for Lutheran Orphanages – Haiti \$70,000
2. Lutheran Braille Workers Plate Embossing Device \$100,000
3. Lutheran Bible Translators (LBT) Spread God's Word Through Print and Audio \$97,344
4. Outreach to At-Risk Children – Detroit, Michigan \$55,000
5. Cancer Care Package Ministry \$100,000
6. Crow Indian Ministry – Montana \$69,999.64
7. Exodus 2:6 Project: Spiritual Care in Disasters – Texas, Louisiana, Oklahoma \$50,000
8. Children's Nutrition and Care – Vietnam \$72,255
9. Grace Place for LCMS International Missionaries \$75,000
10. Pregnancy Center: Newborn Protection – Malaysia, Southeast Asia \$54,500
11. The Lutheran Malaria Initiative – Kenya, East Africa \$100,000
12. Two Graduate Scholarships for International/Minority Students –Concordia Seminary, St. Louis, Missouri \$50,000
13. Project JOEL – Outreach to Youth – Central/South America \$75,000
14. Children's Developmental Disabilities Group Home and Rehabilitation Center – Dominican Republic \$100,000
15. Missionary Family Care and Education \$100,000
16. Gospel Outreach Through Open Arms Child Care \$65,000
17. Haskell Indian Nations University Lutheran Campus Ministry Expansion – Lawrence, Kansas \$100,000
18. Financial Support for LCMS Prison and Jail Ministry Conference \$27,500
19. Physical and Spiritual Nourishment for the Impoverished – United States/Mexico Border Partially funded at \$28,470.36



*Dorothy
Abrahamson*
**Mission
Advocacy &
Grants
Chairman**

**LWML Minnesota North District Mission Project:
Anyuak Ministry, Sauk Rapids, MN ---\$5,000**

The Anyuak ministry in Sauk Rapids began on December 7, 2003 when Luol Omot was confirmed and became a member of Trinity. The Anyuak people, also known as Ethiopian River people, are recent immigrants to the U.S. and the St. Cloud area. Their lives here have had many challenges. Social Services in the St. Cloud area provide food, housing and medical care. Because they are unemployed there are many needs. What is not covered are things like

electricity, gas, car repairs, clothing, Lutheran school tuition, furniture and maintenance for their house or apartment. This ministry exists to support the Anyuak people as they grow in their faith. Along with the ministry of God's Word and Sacrament. The ministry also supports them with emotional, social and physical needs.

Some of the plans for the future goals are: 1) Host a large Easter celebration for all Anyuak in Minnesota. 2) Enroll a leader into the Ethnic Immigrant Institute of Theology. 3) By 2016 have the Anyuak ministry become a member of the LCMS with an ordained Anyuak Pastor. 4) Plant more Anyuak churches in Minneapolis, Austin, Mankato, etc. 5) Plan short term mission trip to Sudan in 2011. 6) Provide financial support, food and medicine to many immediate family members that are still in refugee camps in Ethiopia and Sudan.

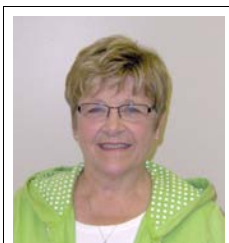


Whoever is thirsty, let him come; and whoever wishes, let him take the free gift of the water of life.

Revelation 22:17b (NIV)

"Now these three remain, faith, hope and love. But the greatest of these is love"

1 Cor.13:13 (NIV).



Ellen Strickler
**Human Care
Chairman**

"Being with Jesus, Living on the Edge," what a glorious Bible verse to celebrate the 34th LWML Convention in Peoria! Close to 5,000 people gathered to hear and learn how they can and should live on the edge. I was one of the 1,300 first-timers to celebrate the moment. The speakers, Bible studies, music, entertainers and fellowship certainly lived up to my excitement and expectations.

On Thursday, the Servant Event Committee did a wonderful job keeping our hands busy with projects to be sent to missions. Over 1,350 women lived on the edge all day, tying fleece blankets and quilts, making welcome kits, marking English and Spanish Bibles, and assembling the book of Psalms and a calendar in Braille. Special handmade machines helped us roll bandages. Jewelry with a message was made, bird houses were painted, lid covers for meals on wheels were colored, and hundreds of pints of blood donated. A special area was also set aside to assemble kits for cancer patients. The huge room was in full "mission mode" as items were completed and stockpiled, ready to answer a need in someone's life.

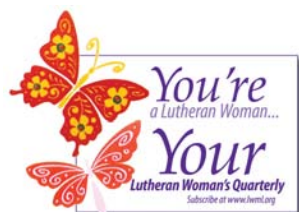


The ingathering was most memorable. The *Gifts from the Heart* gathering area overflowed with items while a semi-trailer was parked outside already half filled. These items came from across the United States, packed in handbags, plastic bags and cardboard boxes of all sizes. They filled the baggage areas of charter buses, the trunks of cars and cavities of airplanes. They came from you—and hundreds of others just like you.

The *Gifts from the Heart* totals: 2,587 quilts, 2,382 towel sets, 2,795 underwear sets, 5,587 kits for men, women and children, and 3,875 miscellaneous items. The collection of Arch Books was overwhelming with 13,205 collected. Can you imagine the joy these books will bring to children who yearn to hear about Jesus!



Minnesota North LWML Women, you are remarkable! Thank you for the part you played in making the ingathering to our Convention so successful. To God be the Glory, as 30,431 *Gifts from the Heart* were blessed and dedicated.



Lutheran Woman's Quarterly information

Any society can make an increase at any time of the year in their *Quarterly* order. Increases, questions, or problems with *Quarterly* subscriptions are to be directed to the Corresponding Secretary JoNette Brogaard.

E-mail: correspondingsec@lwmlmn.org

LWML Minnesota North Convention

June 25-27, 2012

Breezy Point Resort, Pelican Lake

Bible verse: Isaiah 60:1-3 (NIV)

Theme: Arise! Shine! Your Light has Come ...



Mary Kuhnau
**Christian Life
Chairman**

Living on the Edge

The LWML Convention in Peoria was inspiring to all the attendees. We learned about “living on the edge.”

On Friday evening, as we were headed for our dinner, I prayed that I would find someone I knew to sit by. Tables were being seated in groups of ten. An announcement was made that

one more person was needed before a table could be seated. Although I was further back in the line, I raised my hand and was invited to the party being seated.

Several of the people at this table were from Minnesota North District, including two fellow board members. I thought that this was an answer to my prayer. Three of the ladies were from Tennessee. One of them said that she had been born near Alexandria; I live by Alexandria, so the conversation continued:

“What town?”

“It’s a small town; no one has heard of it – Hoffman.”

“I graduated from Hoffman High School”

“What year?”

“1966”

“So did I! What’s your name?”

“Carol.”

As it turns out, this woman was part of my graduating class of 26 students. We had not seen each other for 45 years. What an answer to prayer!



**LWML President Janice M. Wendorf
opening the Peoria Convention**

For the rest of the meals I did not pray to be seated with someone I knew. If God had brought Carol and me together, wouldn’t He continue to guide me towards new friends?



Minnesota North delegates to the convention

Records of St. Paul's Ladies Aid of West Miltona have been received for the LWML Minnesota North District archives. These records include a copy of the original constitution dated April 12, 1923, minutes from 1944 to 2010, membership lists, and many other items containing the history of this society which served the Lord for more than 87 years! What a treasure these records are.



Janet Miller
Archivist-Historian

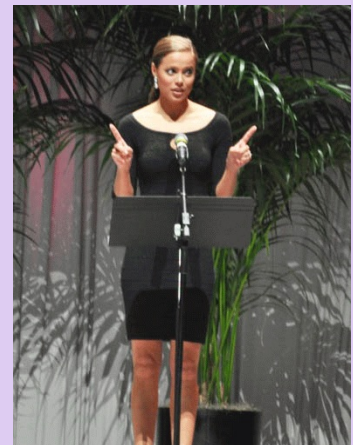
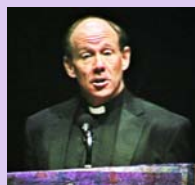
Please remember to forward records of disbanded societies to the archives where they will be kept in a safe environment. The archives will also accept other old records if a local society does not have a suitable place to store them. I would be happy to answer any questions you may have in regard to the archives.

***“When your Bible is well-used—
– the devil is not amused.”***

-Bible Study Leader Dr. Reed Lessing,
Associate Professor and Director
of the Graduate School
at Concordia Seminary, St. Louis, Missouri

2011 Peoria Convention

(Check the LWML website for more convention photos: www.lwml.org)



Top row: MNN delegates to convention, MNN banner, servant event
 2nd row: Humorous Interpreter Heidi Floyd with Barb Andring, 2008-2011 President Janice Wendorf loading Orphan Grain Train, Bible Study Leader Dr. Reed Lessing, Inspirational Speaker Katie Stam
 3rd row: "Mission in Motion," Young Women Representatives Kristina Kuhnau and Kari Kremer, MNN District President Cheryl Petersen
 Bottom row: Installation of Nominating Committee—MNN President Cheryl Petersen (far right), MNN delegates to convention
 [Photos courtesy of Barb Andring]

Mission Grants

June 30, 2011

2010-2012 Mission Goal Status

<i>PROJECTS</i>	<i>GOAL</i>	<i>PREVIOUSLY PAID OR ALLOCATED</i>	<i>PAID OR ALLOCATED THIS QUARTER</i>	<i>BALANCE</i>
<i>Scholarships for Full-Time Church Work Students</i>	\$55,000	\$27,425	\$2,225	\$25,350
<i>Scholarships for Men Preparing for Ordination</i>	\$10,000	\$2,500	\$0	\$7,500
<i>Lutheran Island Camp, Financial Support for Staff Training</i>	\$10,000	\$3,750	\$0	\$6,250
<i>Food Bank at Concordia Seminary, St. Louis</i>	\$5,000	\$1,775	\$2,000	\$1,225
<i>Orphan Grain Train</i>	\$8,500	\$5,000	\$3,500	\$0
<i>Children's Bibles for the People of SE Asia</i>	\$7,500	\$5,000	\$0	\$2,500
<i>Medical Clinic, Cap Haitien, Haiti</i>	\$25,000	\$13,380	\$2,100	\$9,520
<i>Food & Clothing Co-op, Concordia Seminary, Ft. Wayne</i>	\$5,000	\$1,775	\$2,000	\$1,225
<i>Production of Audiocassette Materials - Lutheran Blind Missions</i>	\$4,000	\$1,500	\$0	\$2,500
<i>Anyuak Ministry, Sauk Rapids, MN</i>	\$5,000	\$3,975	\$0	\$ 1,025
TOTALS	\$135,000	\$66,080	\$11,825	\$57,095

All mite contributions should be sent to the Financial Secretary Marilyn Hiltel
6850 Golden Spike Road, Sauk Rapids, MN 56379-9715.

2011-2013 LWML Biennium Mite Challenge
Start Strong ... Finish Strong!

- ★ Join your LWML sisters and brothers in Christ to bring awareness to mite giving that will help us reach the 2011-2013 biennium mite goal.
- ★ Remember your mite box during the summer months!
- ★ Going on vacation? Take your mite box along! Add \$1 for each day's blessing along the way.
- ★ Attending a celebration? Add a donation for each celebration and family gathering you attend.
- ★ Remember that those \$5 bills with the purple marking fit nicely inside your mite box.





August 2011

Prayer and Praise Mite Calendar

Sunday	Monday	Tuesday	Wednesday	Thursday	Friday	Saturday
	1 <i>Sisters Day: Pray with your LWML sisters at Noon</i>	2 MNN Project <i>Pray for seminary students</i>	3 <i>Memorize a Bible verse today - 25¢</i>	4 MNN Project <i>Pray for Lutheran Blind Mission</i>	5 <i>Invite someone to worship with you</i>	6 <i>Pray for "Make A World for Christ Appeal"</i>
7 <i>We love, because He first loved us</i>	8 Pray with your LWML sisters at Noon	9 MNN Project <i>Pray for the ministry of the Orphan Grain Train</i>	10 <i>Thank God for those who serve in the military - 25¢</i>	11 MNN Project <i>Pray for students preparing for church work careers</i>	12 <i>Praise God for the blessing of your community</i>	13 Pray for those attending the LWML Retreat at Lutheran Island Camp
14 <i>Smile Week: Thank God for the gift of laughter</i>	15 Pray with your LWML sisters at Noon	16 MNN Project <i>Pray for Children's Bibles for SE Asia Ministry</i>	17 <i>Share A Smile - 25¢</i>	18 MNN Project <i>Pray for medical mission in Haiti</i>	19 <i>Praise the Lord for the sunrise this morning</i>	20 MNN Project <i>Pray for the staff at Lutheran Island Camp</i>
21 <i>Friendship Week: Greet someone at worship today</i>	22 Pray with your LWML sisters at Noon	23 MNN Project <i>Pray for the Food Bank at Concordia Seminary, St. Louis</i>	24 MNN Project <i>Pray for Anyuak Ministry of Sauk Rapids</i>	25 <i>Women's Equality Day - 25¢</i>	26 <i>Pray for a family from your church</i>	27 MNN Project <i>Pray for Food & Clothing Co-op at Ft. Wayne seminary</i>
28 <i>Pray for the leaders of your church</i>	29 Pray with your LWML sisters at Noon	30 <i>Pray for children in your church</i>	31 <i>Thank God for your family - 25¢</i>			



September 2011

Prayer and Praise Mite Calendar

Sunday	Monday	Tuesday	Wednesday	Thursday	Friday	Saturday
				1 MNN Project Pray for Lutheran Blind Mission	2 Pray for members of our armed forces	3 On holiday vacation? Add 25¢ for each blessing
4 Pray for Bible study leaders at your church	5 Labor Day Labor for Christ!	6 MNN Project Pray for seminary students	7 Thank God for making you unique to serve Him - 25¢	8 MNN Project Pray for students preparing for church work careers	9 Send a "Thinking of You" card to a friend	10 Grow in your faith daily through His Word
11 Grand- parents Day: Pray for them	12 Pray with your LWML sisters at Noon	13 MNN Project Pray for the ministry of the Orphan Grain Train	14 God is Love - share it with someone today - 25¢ Holy Cross Day	15 MNN Project Pray for medical mission in Haiti	16 Befriend a mother of small children	17 MNN Project Pray for the staff at Lutheran Island Camp
18 Pray for the Sunday school teachers	19 Pray with your LWML sisters at Noon	20 MNN Project Pray for Children's Bibles for SE Asia Ministry	21 Use your hands in willing service for Him today - 25¢	22 MNN Project Pray for Anyuak Ministry of Sauk Rapids	23 Autumn begins Praise God for autumn's splendor	24 MNN Project Pray for Food & Clothing Co-op at Ft. Wayne seminary
25 Praise God for the opportunity to worship today	26 Pray with your LWML sisters at Noon	27 MNN Project Pray for the Food Bank at Concordia Seminary, St. Louis	28 Good Neighbor Day: Thank God for your neighbor - 25¢	29 Free-will mite offering	30 Pray for youth in your church	



October 2011

Prayer and Praise Mite Calendar

Sunday	Monday	Tuesday	Wednesday	Thursday	Friday	Saturday
						1 <i>Day for Elderly: Visit, call or write - 25¢</i>
2 <i>Make your offering at church today</i>	3 <i>Pray with your LWML sisters at Noon</i>	4 <i>Pray for LWML MNN board meeting today</i>	5 <i>Pray for the blind and visually impaired people. - 25¢</i>	6 <i>MNN Project Pray for Lutheran Blind Mission</i>	7 <i>Thank God for your spiritual and material blessings</i>	8 <i>MNN Project Pray for the Ministry of Orphan Grain Train</i>
9 <i>Clergy Appreciation Day: Thank the Lord for our Pastors</i>	10 <i>Pray with your LWML sisters at Noon</i>	11 <i>MNN Project Pray for seminary students</i>	12 <i>Pray for your Pastor and his family - 25¢</i>	13 <i>MNN Project Pray for students preparing for church work careers</i>	14 <i>Pray for the homebound members of your congregation</i>	15 <i>MNN Project Pray for the staff at Lutheran Island Camp</i>
16 <i>Pray for the individual you sat near in church today</i>	17 <i>Pray with your LWML sisters at Noon</i>	18 <i>MNN Project Pray for Children's Bibles for SE Asia Ministry</i>	19 <i>Pray for those who need shelter - 25¢</i>	20 <i>MNN Project Pray for medical mission in Haiti</i>	21 <i>Pray for unbelieving family and friends</i>	22 <i>MNN Project Pray for Food & Clothing Co-op at Ft. Wayne seminary</i>
23 <i>Thank God for His Word that was heard today</i>	24 <i>Pray with your LWML sisters at Noon</i>	25 <i>MNN Project Pray for the Food Bank at Concordia Seminary, St. Louis</i>	26 <i>Help or encourage a busy Mom today - 25¢</i>	27 <i>Young Women's Day of Action: Encourage them</i>	28 <i>MNN Project Pray for Anyuak Ministry of Sauk Rapids</i>	29 <i>Praise God for your hope in Jesus, who died for your sins</i>
30 <i>Listen for the signs of God's presence</i>	31 <i>Pray with your LWML sisters at Noon Reformation Day</i>					

Subscription to the LWML *Minnesota Northern Light*

_____ \$4.00 for one year (4 issues)

_____ \$8.00 for two years (8 issues)

Please check one: ☐ New subscription ☐ Renewal Date: _____

Name _____

Address _____

(City) (State) (Zip Code)

Phone _____

e-mail _____

Mail to: Kristin Olsen, Editor
506 - 4th St SE
Little Falls, MN 56345

Make check payable to:
MN North District LWML

A FREE subscription to the e-newsletter version is available by emailing the editor.
Is there a red dot on your mailing label? If so, your subscription has expired. This is the last issue!

The *Minnesota Northern Light* is published quarterly by the Minnesota North District LWML following the meeting of the Board of Directors in January, April, July, and October.

The deadline for articles in the *Minnesota Northern Light* are: March 15, June 15, September 15, and December 15.

Please send your articles, information, and subscriptions to: Kristin Olsen, Editor
506 - 4th Street SE
Little Falls, MN 56345

<editor@lwmlmnn.org>
Phone: 320/632-1773

Minnesota Northern Light
c/o Kristin Olsen, Editor
506 - 4th Street SE
Little Falls, MN 56345

**NON PROFIT
ORGANIZATION
Permit No. 58
Little Falls, MN 56345**

RETURN SERVICE REQUESTED