



MINNESOTA NORTHERN LIGHT

Lutheran Women's Missionary League
Minnesota North District

Serve the Lord with Gladness! Psalm 100:2



SPRING 2013

Inside this issue

Board of Directors	11
Gifts from the Heart	2
Human Care	3
Leader Development	6
Memorials	7
Mission Grants	8
Retreat	9
Scholarships	3
Structure/Bylaws	5
Young Women	4

The Prayer and Praise Mite Calendars are available on the district website under the "Publications" tab.



The mission of the Lutheran Women's Missionary League is to assist each woman of The Lutheran Church—Missouri Synod in affirming her relationship with the Triune God so that she is enabled to use her gifts in ministry to the world.

Visit the LWML websites:
www.lwml.org
www.lwmlmnn.org

President's Pen

Greetings, Sisters in Christ! – Christ is risen, He is risen, indeed!

I attended my first LWML Board of Directors meeting in St. Louis, Mo., as your president in early February. It was great to learn new things, meet other district presidents and LWML officers, be in God's Word, and help make some of the decisions that affect all of us in LWML.

At the board meeting, I heard a lot about the upcoming 2013 Pittsburgh Convention. Some things you should know:

- Our chartered bus from Minnesota North District to the convention is filled up. We praise God for that! We are happy to have some of our LWML North Dakota friends aboard also. If you have questions about availability due to possible cancellations, contact Marilyn Hiltel, Convention Bus Chairman, at bmhiltel@jetup.net.
- Do you send convention offerings with your delegates? The four designated recipients selected by the LWML Board of Directors for the convention offerings are:
 - * Offering #1, LWML Mission Goal 2013-2015 Biennium;
 - * Offering #2, Camp Bethesda, Bethesda Lutheran Communities, Cypress, Texas and Pittsburgh, Pennsylvania Lutheran Center for the Blind;
 - * Offering #3, LCMS Disaster Response—Hurricane Sandy Relief;
 - * Offering #4, LWML Heart to Heart Sister Program.
- Please keep in your prayers the Convention Host Committee (New England District), executive committee, district presidents, delegates, Young Woman Representatives, attendees, speakers, workers, and all involved as they make preparations to go to Pittsburgh to be "Quenched! by the Water."



**President
JoNette Brogaard**



Continued on page 2 ...

In Minnesota North District, we look forward to:

- LWML Prayer Services—check the LWML website (www.lwml.org) for the service. It's great to hear that societies invite each other to this special event!
- Spring Zone Rallies—check www.lwmlmnn.org for the date of your zone's rally. You might want to attend another zone's rally also!
- LWML Retreat at Lutheran Island Camp—look for the registration form in this newsletter and the district website.
- PING sessions in September—more on that later!
- The 2014 LWML Minnesota North District Convention in St. Cloud will be June 23-25.

May the joy of Easter be yours daily as you continue to grow in God's Word, serve Him by serving others, and pray continually!



2013-2015 Primary Targets

The following Primary Targets were adopted by the LWML board for the 2013-2015 biennium:

Nurturing Faith in Christ

We are committed to helping every woman find personal opportunities in her daily life and in her congregation to be nurtured in faith in Jesus Christ and empowered by the Holy Spirit to discover her unique gifts and value in God's family.

Sharing Encouragement

We believe that women value the support, encouragement, and friendship from other women and strive to offer warm, welcoming opportunities for women to grow in faith and relationships as sisters in Christ.

Making Our Mission Meaningful

We challenge and equip women of all ages, stages, ethnicities, and experiences to make a meaningful difference in the lives of hurting, helpless, and unbelieving people at home and throughout the world.

Gifts from the Heart -- for convention

"And we know that for those who love God all things work together for good, for those who are called according to his purpose" (Romans 8:28 ESV).



Pittsburgh here we come -- with our arms full of gifts! At the 2013 LWML Convention these gifts will be given to agencies in the Pittsburgh area. Bring your gifts with you when you register at the convention center, or arrange to send the gifts with someone you know who is attending the convention. (No money will be accepted for Gifts from the Heart at the convention.)

Here are suggested items to donate:

- Quilts/Blankets (all sizes received-baby and children included).
- Wipes & disposable diapers (sizes preemie, newborn, 3 and 4).

Pack the following kit items in a clear plastic zip lock bag and in original packaging:

- Baby Kits: Receiving blankets; sleepers (preemie/newborn); onesies (preemie/newborn); outfits (preemie/newborn); Children's Christian storybook.
- Men's Kits: Men's boxers (L-XXXL); Men's T-shirts (L-XXL); Men's socks; Christian Tract or Bible Verse.
- Bath Kits: Bath towel and washcloth; full-size toothpaste and toothbrush; deodorant for women or men; bath/bar soap; Christian Tract or Bible verse.
- Devotion Kits: Bible (NIV or ESV preferred); devotional; journal and pen.

Go to www.lwml.org/convention where all the details about the convention are available at "Convention Central," including the latest convention news and instructions on how to register for the convention online.

All the registration information can also be found in the Winter 2012 issue of the *Lutheran Woman's Quarterly* convention insert. Simply fill out the required information, enclose your check or credit card number, and mail to the address indicated.

Spring into His service

I am looking forward to April, May and June, the spring months. With spring comes newness: new grass, new flowers, new landscape with no dirty snow, and most important the newness that is given to us by our loving Lord Jesus who went to the cross to bear our sins and then to rise again to give us a “New Life” with eternal salvation. Let us see the many opportunities we have to share this love with others which may include:

Delivering a friendship basket to a new member in your congregation. Visit with them and let them know that you care. The basket could include current LWML resources, a special bookmark, devotion booklet, food items, a small plant, a package of seeds.

Plant flower seeds with a child, grandchild, niece, nephew, and/or neighbor. Set a time to water the plant as needed and share a devotional thought at each of these “growing times.”

Honor the graduates in your congregation with a program and/or gift.

Do something special for others on Mother’s Day and Father’s Day.

And the list can go on and on. Just start counting your blessings and the opportunities to share these blessings will be there.



Deb Anderson
Human Care
Committee

It’s Spring, Wonderful Spring!

School is almost over, there are dreams of summer vacation dancing in our heads, job applications are being submitted and interviews are being scheduled. For those not yet done with their studies it is time to submit your LWML scholarship application, along with your current essays and references.



Linda Jeske
Scholarships
Chairman

As these preparations are underway, it is important that we look to God for guidance. The words of Hymn 707 (LSB) are going through my mind as I write this article. “Oh, that the Lord would guide my ways to keep His statutes still! Oh, that my God would grant me grace to know and do His will!” These lyrics are based on the words of the Psalmist as recorded in Psalm 119:5, 33, 133 and 176.

There are many church work career choices out there to choose from and many paths to follow. Talk with your pastor, teacher, director of Christian education, director of Christian outreach, deaconess, or others who are serving God while serving others about a church work career.

Perhaps you, or someone you know, are already following a secular career path but are feeling the Lord call you into a career of service to His sheep. You might be surprised to know how many pastors and other church workers have answered that call away from secular employment to full time service for the Lord; many have families.

The LWML Minnesota North District stands ready to assist with school expenses through the scholarship funds made possible through LWML mite giving.

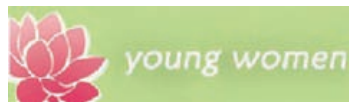
Perhaps you do not plan on attending one of our LCMS universities or seminaries but know of someone who is. Please share this information with them.

Applications can be downloaded from the district website, www.lwmlmnn.org. If you have questions concerning this process, please contact me at scholarships@lwmlmnn.org and I will respond as soon as possible. Please note that the application for scholarship funds must be received by the Scholarships Committee Chairman by May 15, 2013.



Be in Motion for Missions in Pittsburgh!

The Pledge Walk will be held on Friday evening, June 28, from 5:00-6:00 p.m., prior to the dinner hour. In addition to mites, this will be a wonderful opportunity to witness in the Pittsburgh community. Bring pledges from friends and family to convention. Register on Registration Form–Part 2 on page J, and enter the fee on Registration Form–Part 1, No. 9 on page I. A pledge form and complete information will be sent to you after you register. Bring your collected funds for mites in celebration of the 70th Anniversary of the LWML.



Convention YWR Representatives

The Young Woman's Representative (YWR) Committee has selected two young women from LWML Minnesota North District to represent us at the 2013 Pittsburgh convention. After much thought and prayer, Amy Finnern of Sartell and Karena LaPolice of Elk River were chosen from a pool of excellent candidates.

Both Karena and Amy are planning to take the district's charter bus to Pittsburgh, so you will have lots of time to get to know them. They introduce themselves to you below.

Amy Finnern

Greetings in the name of Christ! My name is Amy Finnern and I feel very blessed to be chosen as one of the Young Woman Representatives to the LWML Pittsburgh Convention



in June. I am 34 years old and am currently enjoying a busy vocation as wife and mother. I live in Sartell, Minn. where my husband is pastor at Messiah Lutheran Church. I have been married to my wonderful husband, Rev. Brady L. Finnern, for almost 10 years and we have four beautiful children ranging in age from seven down to two years old. I have two girls in school full-time, Kajsa (7) in first grade and Averil (5) in all-day kindergarten. My son, Elias (4), is in preschool three mornings a week, and my youngest daughter, Xavia (2) is home and showing me all the joys and challenges that come with being the youngest.

I grew up in Ham Lake, Minn., a northern suburb of the Twin Cities and graduated from Blaine High School in 1997. I attended college at Gustavus Adolphus College in St. Peter, Minn., where I received my bachelor's degree in Health

Fitness in 2001. I met my husband, Brady, at Gustavus and followed him to St. Louis in June of 2002 when he began attending Concordia Seminary. I worked in a variety of different fitness positions in St. Louis and was married to Brady in August of 2003.

We moved for one year to Topeka, Kan. where Brady was a vicar and I started up a new clinic-based fitness center in Holton, Kan.. As much as I enjoyed working with individuals and helping them attain fitness goals, I was ready to be a mom and we returned to St. Louis for Brady's final year at the seminary with a baby on the way. That year we were blessed with a beautiful daughter and a variety of jobs to juggle with a baby and school, but we made it to spring and received our first call to North Prairie, Wis. (near Milwaukee).

We lived in North Prairie almost four years and were blessed with two more beautiful children. Then we received and accepted a call to Messiah Lutheran Church in Sartell in May of 2010. I was six months pregnant with our fourth child.

We have been in Sartell for almost three years, and our church family at Messiah has been such a blessing. I am embracing the life of a stay-at-home mom and housewife and love to see what each new day brings with its challenges and its joys. I enjoy time with my family, coffee, exercising, and running. Brady and I look forward to running our third half-marathon together this April in St. Cloud. Lord have mercy!

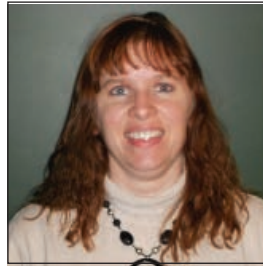
I am involved in the LWML and bowling league through church, but most of all I am a busy mother and wife. I am encouraged and uplifted daily in my vocations through the support of my husband and most of all my Lord and Savior.

The Lord has truly blessed me and I am very excited to be a part of the LWML experience this summer as a YWR. I am looking forward to new friendships, serving in His name, and of course having a little "me" time while taking in and experiencing the full scope of the LWML.

Thank you for selecting me and may Christ's blessings be with each of you and with the LWML in the months to come.

Karena LaPolice

Hi! My name is Karena LaPolice. I live in Big Lake, Minn., with my husband, Lonnie, and my two teenagers, Elizabeth (16) and Dillain (15). I have been a Special Agent for the Internal Revenue Service Criminal Investigation for 11 years.



I grew up in Bertha, Minn., and graduated from Bertha-Hewitt High School. I graduated from Mayville State University, Mayville, N.D., with a Bachelor of Science degree in mathematics and office administration and a minor in accounting.

Our family attends Emmanuel Lutheran Church in Elk River. My husband and I have served as youth group leaders for several years. I am active in the choir, serve as secretary of the Endowment Committee, and have served on several other committees at church. I am currently the president of the LWML Emmanuel Lutheran Church Society. I am the historian for the LWML Rum River Zone and recently served on the LWML Minnesota North District Nominating Committee. I met so many wonderful people in these positions. I'm always learning more about the mission of LWML.

I enjoy spending time with my family at karate classes, where we are all striving for our second and third degree black belts. I also enjoy reading, crocheting, gardening, and driving motorcycle.

I am looking forward to representing the LWML Minnesota North District in Pittsburgh this June. I love being a part of LWML and appreciate the privilege you have given me. Thank you so much for this opportunity!



Pittsburgh—WOW!
June 27-30, 2013

Alleluia! Jesus is risen!
He is risen indeed! Alleluia!

Structure

What a joyous blessing from God for all of us.

The Structure Committee has received several bylaws changes and questions. Thank you zones and societies for working on these.

As you are working on your bylaws, here are some points to remember:

- Bylaw is one word.
- Be clear, concise and to the point.
- Note proper use of capital letters and punctuation.
- Bylaws are to be divided into articles and further divided into sections, then sub-sections.



Doris Weispfennig
Structure
Committee
Chairman



Here are some short definitions:

Constitution: This contains the most essential provisions relating to the organization and unnecessary to have when the national level of the organization is incorporated, as in the LWML. Do not change these. You may have a constitution before you joined LWML. Do not change these, but some items should be taken and put into the society bylaws. You can keep the two together or put the constitution in your history file.

Bylaw: This contains the fundamental rules of an organization relating to itself, rather than parliamentary procedure; defines the object, functions and rules of an organization; requires notice and a specified large majority for amendments.

Standing Rules: This contains rules relating to the details of administration of an organization; can be adopted and/or changed by a majority vote at any meeting without notice.

"Let all things be done decently and in order"
(I Corinthians 14:40 KJV)."

Working with a speaker

Spring is here and it's time for our Spring Rallies and Workshops. One of the highlights of these events is usually the speaker you have asked to come and make a presentation. Your speaker is your guest and becomes a partner with you in making your event a success. I hope the following information will assist you in working with your speaker successfully.



Lynn Lahd
Leader
Development
Chairman

I'm sure, by now, all of you have made that initial contact with your speaker; however, I'm still going to cover your initial contact with the speaker and what information you need to cover with them for a successful event to occur. You will want to discuss:

- the date of the event, the time and location;
- the theme and general description of the event,
- the length of time they are to speak;
- any honorarium or mileage agreed upon;
- what the appropriate dress (casual or more formal) would be;
- ask what equipment they may need; and
- give them the approximate number that you are expecting at the event.
- Finally give them the name, phone number or email address of someone to contact if they have questions.

If you didn't give your speaker the above information when you first spoke with them, be sure you cover it in a follow-up email or letter. It is a good practice to always follow-up with an email or letter of confirmation, generally within a week or two of your first contact with your speaker. This confirmation notice would review the details of your first contact and remind the speaker of your conversation. Give them their contact person's name, phone number and email address again, and let them know that they should inform their contact person about any equipment they may need:

projector, microphone, display table, extension cords, podium, etc.

Did you need more information regarding their biography or did you want a picture for your program? – A good time to request that is in your follow-up email or letter.

If you arrange for your speaker several months in advance of your event, you will want to follow-up with a second letter or email, or even maintain on-going contact with them. The purpose of this correspondence is to reconfirm equipment needs your speaker may have, update the speaker on expected attendance, and keep your speaker advised of any other changing information pertaining to the event. If your speaker is traveling a long distance, you will want to include travel and housing information.

The day of your event has finally arrived. Be sure to assign someone to greet your speaker and act as a hostess or host while your speaker is at the event. When your speaker arrives, show them around the event facility, and assist them in preparing their presentation. Perhaps, this will involve helping them set up a display table, checking that the microphone is working correctly, or helping hand out materials they have brought.



When it's time for the speaker's presentation, how do you introduce them? Introductions should serve two purposes, (1) they warm up the audience and (2) they put the speaker at ease. Depending on how formal the event is you might want to follow this checklist before you give an introduction:

- Get all the background on the speaker that you might need, including special training, positions held, books or articles published and affiliations.

Continued next page ...

Leader Development continued

- Construct your introduction like a miniature speech, complete with an introduction, body, transitions and conclusion.
- Memorize as much of the opening as you can. It sounds better than if you read it. You want to seem conversational.
- Pause long enough to get audience member's attention before you begin. Then speak with energy, enthusiasm, and warmth. Remember it's your job to spark the audience's interest.
- Make sure you pronounce the speaker's name properly and clearly.
- End your introduction by encouraging applause. You can say, "Please join me in welcoming ..." Then lead the applause. All speakers welcome a warm reception.

After the speaker's presentation, you will want to have the honorarium check ready for the speaker. A second check for mileage and other costs may be included with a thank you letter after the event. You should send a thank you letter within a week of the event; and if you have feedback for the speaker, you can send it to them at this time.

Remember, the speaker is your partner in making your event special and meaningful for all the attendees. You will want to make the speaker's experience something that will make their memory of LWML something special too.

[The information above contains highlights taken from, "Event Planners and Guest Speakers: Partners with a Purpose!" This is a free handout available from LWML (LWML catalog #13222) and from "How to Introduce a Speaker" taken from the May 2004 Communication Briefings publication.]

LWML offers many resources that can assist us in fulfilling our duties as an officer and leader in our districts, zones, and societies. Be sure and come June 27-30, 2013 to the LWML convention in Pittsburgh, "Quenched! By the Water," and see many of the resources available to you.

*Serve the Lord
With Gladness*



- Walter Twp., Bellingham, Trinity for Clifford Price.
- Parkers Prairie, Immanuel for Ruth Bowland and Gladys Hedeem.
- Bemidji, Trinity Ladies Aid, for Marilyn Sampson.
- Alexandria, Zion Women's Fellowship, for Leona Raap.
- Marjorie Richter for Gertrude Glawe.
- Parkers Prairie, Immanuel, for Ruth Bowland.
- Joyce Mennicke, the Rev. John Lehenbauer family, Scott & Joy Eskuri, , the Rev. and Mrs. John Beck for Rev. Norman Aman.
- Loon Lake, St. Paul's, for Genevieve Bradbury.
- Loon Lake, St. Paul's, for Eleanor Ohm.
- Sauk Rapids, Trinity, for Sylvia Kuschel and Lillian Wolf.

Memorial and honor gifts should be sent to:
LWML MN North District,
c/o Financial Secretary Marilyn Hiltel
6850 Golden Spike Road
Sauk Rapids, MN 56379-9715

PayPal is now available for mite donations!

Have you always wanted an easier way to give to missions online? Now you can with LWML's PayPal account. Donate online three ways:

FaceBook: Go to www.facebook.com/theLWML; click on the Mite Box titled "Donate Today;" choose to donate using PayPal or your credit card; enter the amount you would like to give.

LWML Website: Go to www.lwml.org; click on the "Donate" button on the home page; choose to donate using PayPal or your credit card; enter the amount you would like to give.

LWML Online Store: Go to www.lwml.org/shop; click on the "Donations" category (you may donate to mites, in honor or memory of a loved one, to Disaster Relief, or the LWML Endowment Fund); enter the amount you would like to give; click "Add to Cart" (only your credit card may be used with this option).

Mission Grants

#3 Lutheran Island Camp, Financial Support for Staff Training - \$10,000

Working at Lutheran Island Camp provides a great training experience for young people to learn daily habits of love, fellowship, and spiritual growth. Financial assistance with staff salary and training fees frees up funds for other program needs. Staff members are taught how to direct youth thinking to God's plans for them and becoming aware of God's presence constantly. An ongoing benefit is the impact the training has on the staff in their vocational choices, as many are influenced to enter church work.



#9 Christian Story Book for Southeast Asia - \$1,000

Religious freedom is limited and Christians are persecuted in the area of Southeast Asia. The pseudonym "Khon" is used to prevent public exposure of the identities of the Khon community who are part of the Bible translation and literacy team. Funds will be used to print 500 storybooks at a local printer in Thailand, at a cost of US \$2.00 each. These books keep the Khon literacy alive and support access to Scripture for the Khon church by helping to develop materials to teach the Khon how to read and write in their own language, as a tool to spread the Gospel. The storybook will include simplified Bible stories and testimonies of local Khon believers.



Excerpts from thank you's from grant recipients:

Anyuak Ministry "... John Bakou, our Anyuak Evangelist, and I thank you and all the women in the LWML Minnesota North District for your support of this outreach to Anyuak in St. Cloud. Some of this money, \$500, is designated for Sunday school materials that we are in need of now ... Your support is making a difference among the Anyuak people here in central Minnesota."

Craig Cooper, DCO and John Bakou, Vicar

Helping New Believers Grow in Christ—A Christian Storybook for Southeast "Asia" "... A very heartfelt thank you to the women of Minnesota North District for their prayer and financial support to Lutheran Bible translators, especially for funding the above project ... May God bless the women of Minnesota North District. Our joint efforts, blessed by God, will bring many more before His throne of glory."

Sharon Vega, LBT



Judy Uran
Mission Grants
Chairman



**2012-2014
Mission Goal
Status as of
March 31,
2013**

	Goal	Balance
#1 Orphan Grain Train	\$ 8,500	\$ 5,500.00
#2 Scholarships for Full-Time Church Work Students	\$ 50,000	\$30,000.00
#3 Financial Support and Staff Training—Lutheran Island Camp	\$ 10,000	\$ 5,000.00
#4 Food and Clothing Co-op, Ft. Wayne	\$ 10,000	\$ 4,000.00
#5 Scholarships for Men Preparing for Ordination	\$ 5,000	\$ 3,138.02
#6 Vehicles for Pastors and Vicars in Haiti	\$ 20,000	\$11,000.00
#7 Christian Education at Dakota Boys and Girls Ranch RRV	\$ 5,000	\$ 2,000.00
#8 Construct Classroom Building in Yambio, So. Sudan (LHF)	\$ 10,000	Paid in Full
#9 Christian Storybooks for SE Asia (LBT)	\$ 1,000	Paid in Full
#10 Anyuak Ministry, Sauk Rapids	\$ 5,000	Paid in Full
#11 Servant Events on the Fond du Lac Reservation	\$ 5,000	\$ 1,900.00
#12 Mary Okeyo Student Scholarship Fund for Travel	\$ 5,500	\$ 3,500.00
TOTAL	\$135,000	\$66,038.02

2013 LWML RETREAT

"In the Beginning God Created..." Genesis 1:1

What about evolution?

How do I tell others the truth about creation?



LWML Retreat August 9-11, 2013 at Lutheran Island Camp

Brian Young, Director of Creation Instruction Association, has been speaking on the topic of creation and Biblical authority

for 20 years, doing debates at universities, going into prisons, and sharing at churches, schools and camps around the world. He uses the Bible as the foundation for science and education.

Pastor Don Stauty of Virginia, MN, will lead our Bible study. He is serving as the Arrowhead Regional Pastoral Counselor and serves both Gloria Dei and Redeemer churches.

The Saturday evening entertainment will be **Messiah's Minnesota Minutemen** who use drama to share the Gospel to the world.

Attention – Mothers Of 3-8 Year-old Children:

Lutheran Island Camp offers *Discovery Camps*; the *Little Lambs* and *Sheep Camp*. They run simultaneously with the LWML Retreat. For more details about these programs and to register your child, go to: www.islandcamp.org

Be sure to invite your daughters and granddaughters!

FRIDAY EVENING

4:00-6:00 pm Registration
7:00-8:30 pm Mixer & Bible study - *Pastor Stauty*
8:30 pm Campfire
9:30 pm Snacks in the Fireside room

SATURDAY

7:00-8:00 am Registration
8:00 am Breakfast
8:30 am Devotions and Announcements
8:45 am Bible study - *Pastor Stauty*
10:00-11:45 am Speaker - *Brian Young*
12 noon Lunch
1:00-3:30 pm Speaker - *Brian Young*
3:30 pm Free time - (Crafts, pontoon rides, swimming, etc.)
5:00 pm Dinner
6:30 pm Entertainment: *Messiah's Minnesota Minutemen*
8:30 pm Campfire



SUNDAY

8:00 am Continental breakfast
10:00 am Worship
11:00 am Brunch and farewell

FOR MORE INFORMATION CONTACT:

Mary Kuhnau at:
christianlife@lwmlmnn.org
or call (320) 834-2135
Updates about the retreat and a map to LIC can be found on the District website:
www.lwmlmnn.org

ITEMS TO BRING:

- Bible • Flashlight
- Clothes for Sun or Rain
- Insect Repellent
- Towel & Washcloth
- Toiletries
- Pillow, Bedding or Sleeping Bag
- **Snacks for Friday Evening**

CUT HERE CUT HERE CUT HERE



2013 LWML Retreat
August 9-11, 2013
at Lutheran Island Camp
"In the Beginning God Created..."
Genesis 1:1

Name : _____
Address : _____
Phone : _____
Email : _____
Special Needs : _____
Roommates : _____

Registration Deadline: August 1, 2013

(There will be an additional \$10 fee for late registration. No refunds after August 8. Young women ages 12-17 receive a 25% discount.) Friday night meals are not available.

✓ Check	Before Aug. 1 st	After Aug. 1 st
<input type="checkbox"/> Friday-Sunday	\$115	\$125
<input type="checkbox"/> Friday-Saturday	\$65	\$75
<input type="checkbox"/> Saturday Only	\$40	\$50

Choose your housing preference:

☐ Cabin ☐ Retreat Center

Make Check Payable To: **LWML MN North District**

Send Registration To: Mary Kuhnau
1536 71ST St NW
Alexandria, MN 56308



35th Biennial LWML Convention June 27-30, 2013

Scripture verse:

[Jesus said:] "... but whoever drinks of the water that I will give him will never be thirsty again. The water that I will give him will become in him a spring of water welling up to eternal life" (John 4:14).

Convention goal statement:

Quenched by Christ's redeeming grace, I am empowered by the Holy Spirit to be a wellspring of the Father's love.

Convention objectives:

Convention attendees will:

- Glorify the Father, Son, and Holy Spirit.
- Drink deeply from His Word.
- Share His overflowing of love.

You will want to be at the convention for the Opening Worship Service to hear the proclaimer, the Rev. Dr. Dien Taylor on Thursday night, until the Sunday Morning Worship Service led by the Rev. Dr. Victor Belton, as well as all the wonderful events in between.

The LWML Neighborhood Block Party on Friday evening, after the Mission Pledge Walk, will be a great time to take in all the activities and for visiting with friends.

For up-to-date convention information, visit the website at www.lwml.org/conventions.

LWML is Purple! Now LWML is "Going Green"

Do you have your favorite LWML convention bag? Perhaps you have several. In an effort to "go green" you are asked to provide your own bag at the convention. You might also want to give one to a friend who is attending her first convention. What fun it will be to see the different variety of bags!

Thrivent Choice® options

The Lutheran Women's Missionary League and LWML Minnesota North District have been greatly blessed by the gifts they have received over the past two years from Thrivent Financial for Lutherans through the Thrivent Choice Program. We are excited that this program will continue in 2013 and that Thrivent members will once again be able to direct their Choice Dollars to an organization of their choice.

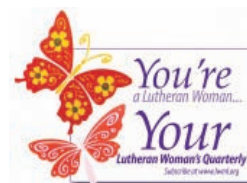
Many members have graciously chosen the LWML as their ministry organization to support and in the past have set up a recurring direction of dollars to LWML each time they are available. Going forward, the recurring direction of Choice Dollars is no longer available, which means that members need to manually direct their Choice Dollars to LWML or an organization of their choice.

This can be done very simply with a phone call to (800) 847-4836, or if you have access to the Internet, at www.thrivent.com. The Internet option gives you full access to your balances,

all available recipient organizations, and a simple way to direct your dollars at any time that you would like. Use either the phone or Internet method to make sure you don't miss out on a giving opportunity to support LWML – Lutheran Women in Mission!

LWML MN North District is listed as "Lutheran Womens Missionary League Minnesota North District of Brainerd, MN."

Thanks for remembering LWML with Thrivent Choice! Your choice is a huge blessing as we partner together in ministry to share God's Word and grow His kingdom!



Your *Lutheran Woman's Quarterly* subscription questions should be directed to our Corresponding Secretary, Tessa Giru, correspondingsec@lwmlmnn.org.

Please send your photos, articles, and information for *The Lutheran Witness* supplement page to: Kristin Olsen, Editor, editor@lwmlmnn.org.

The Minnesota Northern Light is published quarterly by the LWML Minnesota North District following the meeting of the Board of Directors in January, April, July, and October.

LWML MINNESOTA NORTH DISTRICT BOARD OF DIRECTORS

Executive Committee

President:

JoNette Brogaard, 320-846-0984
president@lwmlmnn.org

Executive Vice President:

Mary Kuhnau, 320-834-2135
christianlife@lwmlmnn.org

Recording Secretary:

Lynnette Roshell, 651-233-7226
recordingsec@lwmlmnn.org
youngwomen@lwmlmnn.org

Corresponding Secretary:

Tessa Giru, 218-682-3432
correspondingsec@lwmlmnn.org

Financial Secretary:

Marilyn Hiltel, 320-387-2219
financialsec@lwmlmnn.org

Treasurer:

Jenny Biorn, 763-263-1025
treasurer@lwmlmnn.org

Regional Vice Presidents

Arrowhead I:

Judy Uran, 218-879-5373
missiongrants@lwmlmnn.org

Arrowhead II:

Lynn Lahd, 651-245-6552
leaderdevelopment@lwmlmnn.org

Lakeland I:

Doris Weispfennig, 320-554-3324
structure@lwmlmnn.org

Lakeland II:

Janet Hasbargen, 320-563-4962
publicrelations@lwmlmnn.org

Park I:

Deb Anderson, 218-732-4395
humancare@lwmlmnn.org

Park II:

Linda Jeske, 320-594-3034
scholarships@lwmlmnn.org

Pastoral Counselors

Arrowhead Region:

Rev. Don Sauty, 218-741-1977 (O),
218-749-5541 (H)
arrowheadpc@lwmlmnn.org

Lakeland Region:

Rev. Ronald Hobbie, 320-269-9229
lakelandpc@lwmlmnn.org

Park Region:

Rev. Anthony Cloose, 218-334-8125
parkpc@lwmlmnn.org

Appointed Personnel

Editor:

Kristin Olsen, 320-632-1773
editor@lwmlmnn.org

Archivist-Historian:

Kathleen Brehmer, 320-255-8987
historian@lwmlmnn.org

Information Technologist:

James Wagner, 218-289-2457
InformationTech@lwmlmnn.org

Committee Chairmen

Christian Life: Mary Kuhnau

Human Care: Deb Anderson

Mission Grants: Judy Uran

Structure: Doris Weispfennig

Leader Development: Lynn Lahd

Scholarships: Linda Jeske

Young Women: Lynnette Roshell

Public Relations: Janet Hasbargen

Websites:

LWML: www.lwml.org

LWML Minnesota North:
www.lwmlmnn.org



2012-2014 Board of Directors

Back row: Linda Jeske, Rev. Don Sauty, Rev. Ron Hobbie, James Wagner, Rev. Anthony Cloose, Lynnette Roshell.
Middle row: Janet Hasbargen, Mary Kuhnau, Kathleen Brehmer, Lynn Lahd, Deb Anderson, Kristin Olsen.
Front row: Judy Uran, Doris Weispfennig, JoNette Brogaard, Jenny Biorn, Marilyn Hiltel, Tessa Giru.