



DAILY ILLUMINATION

**Lutheran Women's Missionary League
Minnesota North District**

**25th Biennial Convention
June 25-27, 2012**

Issue 1

Breezy Point, Minnesota

June 25, 2012

Convention Highlights

MONDAY

- 11:00am Registration begins
- 10:00am-4:00pm Servant Events
- 1:00-5:00pm Exhibit Booths open
- 10:00am-4:00pm Ingathering
- 1:00-2:15pm -Breakout Session I
- 2:30-3:45pm Breakout Session II
- 4:00pm Choir Rehearsal
- 5:00-6:30pm Dinner Hour - Buffet
- 7:00pm OPENING WORSHIP
- 8:30pm Meet & Greet Reception
- 9:00pm YWR Get Together
-Heart to Heart Sisters
Get Together

TUESDAY

- 7:00-8:15am Registration
- 6:30-7:45am Breakfast
- 7:00-8:00am Exhibit Booths open
- 7:30am Singing with Barb Schewe



*Arise, shine, for
your light has
come, and the
glory of the Lord
rises upon you.
See, darkness*

*covers the earth and thick darkness
is over the peoples, but the Lord
rises upon you and his glory appears
over you. Nations will come to your
light, and kings to the brightness of
your dawn. (Isaiah 60:1-3 NIV)*

President's Welcome

Welcome to the 25th Biennial Convention of the Lutheran Women's Missionary League Minnesota North! Over the course of our gathering here at Breezy Point, we will learn of God's plans for us in our lives as we discover how we can Arise! and Shine!

As we spend our time here next to Pelican Lake and enjoy the amenities of the resort, I pray that you will delight not only in the splendor of God's creation, but also savor the moments in times spent with acquaintances—both formed and new. Enjoy the coming days with other Women in Mission, as we worship, fellowship, study the Word, serve, and yes, conduct the business of our district.

God bless our time together as we reflect His Light and His Glory.

Cheryl Petersen, President



Welcome to Breezy Point!

“Arise! Shine! Your Light has Come!” Isaiah 60: 1-3 NIV.

It is my privilege as Nuclei Chairman to welcome you to the Lutheran Women's Missionary League Minnesota North District Convention, at beautiful Breezy Point Resort as our backdrop.

The Nuclei Committee is here at convention to be of assistance to those who are in attendance. You will be able to recognize the committee members by their yellow tops. If you have a question during convention, just ask us. We want to make your convention experience an enjoyable one.

God richly bless your experience at convention.

Peggy McKeown, Nuclei Chairman

*The 2012
Convention
Nuclei
Committee*



You're invited to the Meet and Greet Reception tonight

Tomorrow you will have the opportunity to elect new officers for the coming biennium. Tonight you will have the opportunity to meet the candidates at an open reception in the Lakeside Ballroom. Come visit with them at 8:30 p.m.—after tonight's worship service.



Welcome Young Women Representatives!

Anyone attending the convention age 35 or under is invited to attend the Young Women event held Monday, June 25, in the Heartland Room. This will follow the Candidate Meet and Greet.

Young Women attending the convention will spend some time getting to know each other and learning about the LWML organization. We also have some special guests invited to join us (they happen to be older than 35).

Look for details in tomorrow's *Daily Illumination* for the Young Women event to be held on Tuesday evening following the entertainment.

Lynnette Roshell
YWR Chairman

Ingathering and Servant Events

With your bags, boxes and totes full of items for the ingathering, the Human Care Committee is anxious to greet you and thank you for your generosity. The Ingathering items will be collected in Minnesota Room I near the registration area. Just drop them off before you take part in other convention activities.

You are also invited to take part in the servant events between 10:00 a.m. and 4:00 p.m. We will be set up earlier than planned in the Pelican Pier Room across the driveway from the main lobby entrance. Come ready to serve others as we "shine" in His Light.



Ellen Strickler
Human Care Chairman

Recycled Convention Bag Contest

Attention!
All convention attendees!



Register for one of three prizes being awarded for the recycled LWML convention bags at the convention bag table near the registration tables.

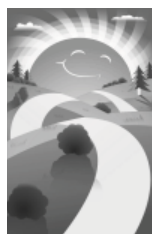
There are three different categories for prizes.

Complete the slip of paper available with your name, the year of the convention your recycled bag is from, and your zone.

Look in future issues of the *Daily Illumination* for more information.

The prize winners names and information pertaining to where to pick up each prize following the close of convention meeting #4 will be published.

SON Rise Mite Walk Wednesday Morning 6:00-7:30 a.m.



The Mite Walk will begin at the Fawcett House, which is next to the Convention Center at Breezy Point. You will walk south as far as the causeway. There are several roads to choose from to return to the Convention Center. Maps will be available for the walkers, and we expect to have flags/markers on the route.

Massages for Mites

At convention, you can receive a massage to help towards the mite goal. Scarlet Dittmann from New York Mills will be giving massages for mites.

Scarlet is a national certified massage therapist. She is a long time LWML member and is going to be giving chair massages from 1:00 p.m. to 4:00 p.m. on Monday.

A suggested donation of \$10 for each massage will be given towards the 2012-2014 mite goal. Find her booth on Monday and make an appointment.

Miles for Mites

Share your Miles for Mites collection at the registration table. Thank you for helping us reach our 2012-2014 mite goal!



Calculate the number of miles you drove from your home to the convention and give a donation of 10¢ for every mile for our 2012-2014 mite goal.

- Add \$1.00 if you traveled less than 100 miles to the convention.
- Add 25¢ for every church you passed.
- Add 25¢ for every lake and river you went by.



Have you noticed there are more women of diverse ethnic backgrounds in your congregation? Please attend one of the Breakout Sessions on Heart to Heart Sisters, or join us on Monday evening after the Meet and Greet Reception in the Heartland Room to learn about welcoming people from other cultures into our LWML societies and into our communities.

Zone Banners

Bring your zone banners to the Minnesota I room upon arrival. The banner poles and stands will be in that room. All zone banner carriers should meet at 6:30 p.m. in the Pelican Room on the second level. Bring your banner and pole to this room.

Photos

There will not be any scheduled photo-taking times for zones or societies. You will need to gather your members together during a break, and provide your own photographer.

Shuttle Bus Service

Shuttle bus service is available throughout the convention. The shuttle bus will pick you up anywhere on the Breezy Point property—just dial “0” from any phone.



Prayer Chapel

The Prayer Chapel is located in The Observatory Room, which is located at the Lakeside Ballroom. The Prayer Chapel will be open during convention sessions. There is a prayer request box which will be checked often for your special requests.

Mass Choir Rehearsal

Choir rehearsal will be held at 4:00 p.m. Monday in the convention hall, Whitebirch Rooms I & II, which is located on the second floor of the Convention Center.

First Aid Station

The First Aid Station is located in Heartland I. This will be open during convention sessions. We have three nurses who have volunteered to help us out at convention.

Lost and Found

Found items may be brought to the registration table. You may inquire about lost items in the same place.

Message Board

The message board will be located in the registration area. If you have a message for someone, please post it on the board. Be sure to check the board once in a while to see if you have messages.

Day Care

If you registered your child for day care, this is located at the Breezy Inn, in the Pequot Room, which is on the third floor. Day care is provided during convention sessions and the full convention package includes Tuesday lunch.

Breakout Session Information

Breakout Sessions will be offered on Monday. On the bottom left corner of your name tag you will find a two letter code – this is for the breakout sessions you will be attending. The **first letter** represents the first session which **starts at 1:00**. The **second letter** represents the second session which **starts at 2:30**. If one of the two letters is an X, that means you did not sign up for that session.

Session Letter Code and Breakout Room Location Assignment:

- A= Whitebirch II (Convention Hall). . . Crossing Barriers-Building Bridges by Cynthia Khan
- B= Heartland I and II . . . LWML 101 by Edie Norris
- C= Lakeside Ballroom . . . PURSEsonalities by Jilleen Butler
- D= Pelican Room . . . Be, Know, Do – Serving Through Action by Chaplain Eric Erkinen
- E= Governor’s Room . . . Heart to Heart Sisters by Sheila Peterson
- X= No session. You are free to participate in servant events or view the exhibit booths.

Visit the Exhibit Hall – It's located in Minnesota II

Plan to spend some time viewing the exhibits where you will be able to shop, learn, ask questions and meet some very friendly people.

The Exhibit Hall will be open Monday, 1:00 to 5:00 p.m. and Tuesday, 7:00-8:00 a.m.; 12:00 to 1:15 p.m. and 4:30 to 6:00 p.m.

These exhibitors have set up tables and displays for your learning enjoyment:

- * Lutheran Laymen's League
- * Orphan Grain Train
- * Luth. Church Extension Fund
- * Lutheran Bible Translators
- * Lutheran Heritage Foundation
- * Dakota Boys & Girls Ranch
- * Lutheran Mission Association
- * Concordia Publishing House
- * Confess. Luth. Ed. Foundation
- * Concordia University- St Paul
- * Conf. Luth. for Christ's Comm.
- * Lutheran Braille Workers
- * MN North Lutheran Schools
- * Lutheran Island Camp
- * LWML Committees

Archivist-Historian Exhibit

If you are able to stop at the Archivist-Historian display, you may be able to help identify some people in photographs and view hats worn by a former district president!

Gospel Outreach Exhibit

There will be a drawing for a 11" x 32" LWML wall hanging at our display. The item is valued at \$16.00. Stop by and check it out! There will also be handouts from a variety of missions to pique your interest.

LWML Store

The LWML Store is located in the Exhibit Hall.

There are several clothing items available for you to try on, and some lovely shawls to keep you warm if there is a chill in the air. You will want to check out the new jewelry items, LWML stadium cups, plus books and miscellaneous items, so be sure to stop by and look them over.

You can purchase your convention charm or tack for \$2.00 off regular price with your coupon.

If there is something you are wanting to purchase but we do not have it, you may order it from the catalog and it will be shipped to you postage free.

All items must be paid for by cash or check at the time of purchase. Credit cards cannot be accepted. Look for the friendly ladies wearing a purple flower on their yellow shirts – they will be waiting to assist you.



The Minnesota North District extends a big 'Thank you' to Lutheran Church Extension Fund (LCEF) for

their assistance in funding the following for our convention:

- The Meet and Greet Reception.
- Subsidizing the production of the convention charms.
- Lunch for the officers at the Transition Meeting.

A special thank you to George Miller from the MN North District office for his generosity in assisting our LWML Minnesota North District during the past two years.

American Flag Prayer Shawl Project

A BIG thank you to all the ladies who lent their time and talents to work on this project. The response has been truly amazing. The original goal was 1,000. The actual number received is well over that. As of this writing over 2,674 have been received! The final count will be announced on Tuesday.

It is my prayer that this outreach to our military men and women will continue through individuals and societies so that they will be reminded they are not alone, that God is with them, and that we are holding them up in prayer. For a pattern, email Linda Jeske at lkjeske@twecwb.com.

Press Room

This is located in Heartland IV. Items for publication in the convention newspaper, *Daily Illumination*, may be dropped off here. The deadline for both Issue 2 and Issue 3 is 9:00 p.m. You may also bring email address changes and sign-up for your email subscription to the *Minnesota Northern Light*.

Lutheran Women's
Missionary League
Minnesota North
District
Daily Illumination
Convention
Newsletter
Editor Kristin Olsen



MN North Website:
www.lwmlmnn.org
LWML Website:
www.lwml.org